

peronda

SALINES BONE/100/R

Model: **SALINES BONE/100/R**
Reference: **23136** **BONE**
Size: **33,3X100** cm
Thickness: **7,00** mm
Finish: **Natural**
Body Type: **WALL TILE - GROUP BIII**
GL - GLAZED Ceramic Tile



Water absorption

EN ISO-10545-3	Water absorption	> 10%
----------------	------------------	-------

Dimensional characteristics

EN ISO-10545-2	Surface quality	> 95%
EN ISO-10545-2	Curvature flatness	0,5/-0,3% +2,0/-1,5 mm
EN ISO-10545-2	Thickness	± 10% / ± 0,5 mm
EN ISO-10545-2	Length and Width	± 0,5 % / ± 2,0 mm
EN ISO-10545-2	Rectangularity	± 0,5% / ± 2,0 mm
EN ISO-10545-2	Straightness of sides	± 0,3 % / ± 1,5 mm

Mechanical characteristics

EN ISO 10545-11	Crazing resistance	Pass
EN ISO 10545-9	Thermal shock resistance	Pass
EN ISO-10545-4	Breaking strength	> 600 N
EN ISO-10545-4	Modulus of rupture	> 12 N/mm ²

Surface characteristics

EN ISO 10545-7	Visible failure at No of revolutions	-
EN-101	Surface scratch resistance	3

Chemical characteristics

EN ISO-10545-13	High concentrations of acids and alkalis	HA/HA/HA
EN ISO-10545-13	Low concentrations of acids and alkalis	LA/LA/LA
EN ISO-10545-13	Household chemicals and swimming pool salts	A/A
EN ISO-10545-14	Stain resistance	5/-/5/5

peronda

SALINES BONE/100/R

Model: **SALINES BONE/100/R**
Reference: **23136** **BONE**
Size: **33,3X100** cm
Thickness: **7,00** mm
Finish: **Natural**
Body Type: **WALL TILE - GROUP BIII**
GL - GLAZED Ceramic Tile



Non-slip characteristics

DIN-51130	Critical angle (footwear)	-
-----------	---------------------------	---

CE MARKING



CE Declaration of Performance: **004CPR2017-08-01**

Before laying the tiles, check the shade, calibre and quality. No claims will be accepted once the tiles have been laid. Leave a tile joint of at least 0.5 mm in the case of rectified tiles and 1.5 mm for non-rectified ones. The tile colour shown in this data sheet is merely indicative and it might differ from the real tile colour. This document is purely for sales purposes and it cannot be used in any legal or administrative proceedings, in a witness statement, or as documentary proof without the express permission of PERONDA GROUP.

peronda

SALINES WHITE/100/R

Model: **SALINES WHITE/100/R**
Reference: **23142** **WHITE**
Size: **33,3X100** cm
Thickness: **7,00** mm
Finish: **Natural**
Body Type: **WALL TILE - GROUP BIII**
GL - GLAZED Ceramic Tile



Water absorption

EN ISO-10545-3	Water absorption	> 10%
----------------	------------------	-------

Dimensional characteristics

EN ISO-10545-2	Surface quality	> 95%
EN ISO-10545-2	Curvature flatness	·0,5/-0,3% +2,0/-1,5 mm
EN ISO-10545-2	Thickness	± 10% / ± 0,5 mm
EN ISO-10545-2	Length and Width	± 0,5 % / ± 2,0 mm
EN ISO-10545-2	Rectangularity	± 0,5% / ± 2,0 mm
EN ISO-10545-2	Straightness of sides	± 0,3 % / ± 1,5 mm

Mechanical characteristics

EN ISO 10545-11	Crazing resistance	Pass
EN ISO 10545-9	Thermal shock resistance	Pass
EN ISO-10545-4	Breaking strength	> 600 N
EN ISO-10545-4	Modulus of rupture	> 12 N/mm ²

Surface characteristics

EN ISO 10545-7	Visible failure at No of revolutions	-
EN-101	Surface scratch resistance	3

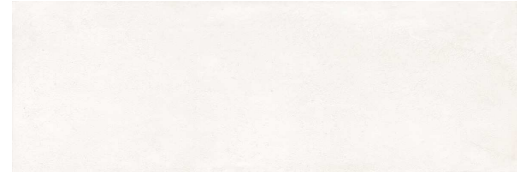
Chemical characteristics

EN ISO-10545-13	High concentrations of acids and alkalis	HA/HA/HA
EN ISO-10545-13	Low concentrations of acids and alkalis	LA/LA/LA
EN ISO-10545-13	Household chemicals and swimming pool salts	A/A
EN ISO-10545-14	Stain resistance	5/-/5/5

peronda

SALINES WHITE/100/R

Model: **SALINES WHITE/100/R**
Reference: **23142** **WHITE**
Size: **33,3X100** cm
Thickness: **7,00** mm
Finish: **Natural**
Body Type: **WALL TILE - GROUP BIII**
GL - GLAZED Ceramic Tile



Non-slip characteristics

DIN-51130	Critical angle (footwear)	-
-----------	---------------------------	---

CE MARKING



CE Declaration of Performance: **004CPR2017-08-01**

Before laying the tiles, check the shade, calibre and quality. No claims will be accepted once the tiles have been laid. Leave a tile joint of at least 0.5 mm in the case of rectified tiles and 1.5 mm for non-rectified ones. The tile colour shown in this data sheet is merely indicative and it might differ from the real tile colour. This document is purely for sales purposes and it cannot be used in any legal or administrative proceedings, in a witness statement, or as documentary proof without the express permission of PERONDA GROUP.

peronda

SALINES SILVER/100/R

Model: **SALINES SILVER/100/R**
Reference: **23143** **SILVER**
Size: **33,3X100** cm
Thickness: **7,00** mm
Finish: **Natural**
Body Type: **WALL TILE - GROUP BIII**
GL - GLAZED Ceramic Tile



Water absorption

EN ISO-10545-3	Water absorption	> 10%
----------------	------------------	-------

Dimensional characteristics

EN ISO-10545-2	Surface quality	> 95%
EN ISO-10545-2	Curvature flatness	·0,5/-0,3% +2,0/-1,5 mm
EN ISO-10545-2	Thickness	± 10% / ± 0,5 mm
EN ISO-10545-2	Length and Width	± 0,5 % / ± 2,0 mm
EN ISO-10545-2	Rectangularity	± 0,5% / ± 2,0 mm
EN ISO-10545-2	Straightness of sides	± 0,3 % / ± 1,5 mm

Mechanical characteristics

EN ISO 10545-11	Crazing resistance	Pass
EN ISO 10545-9	Thermal shock resistance	Pass
EN ISO-10545-4	Breaking strength	> 600 N
EN ISO-10545-4	Modulus of rupture	> 12 N/mm ²

Surface characteristics

EN ISO 10545-7	Visible failure at No of revolutions	-
EN-101	Surface scratch resistance	3

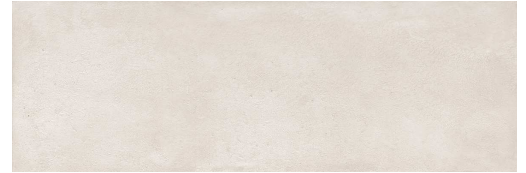
Chemical characteristics

EN ISO-10545-13	High concentrations of acids and alkalis	HA/HA/HA
EN ISO-10545-13	Low concentrations of acids and alkalis	LA/LA/LA
EN ISO-10545-13	Household chemicals and swimming pool salts	A/A
EN ISO-10545-14	Stain resistance	5/-/5/5

peronda

SALINES SILVER/100/R

Model: **SALINES SILVER/100/R**
Reference: **23143** **SILVER**
Size: **33,3X100** cm
Thickness: **7,00** mm
Finish: **Natural**
Body Type: **WALL TILE - GROUP BIII**
GL - GLAZED Ceramic Tile



Non-slip characteristics

DIN-51130	Critical angle (footwear)	-
-----------	---------------------------	---

CE MARKING



CE Declaration of Performance: **004CPR2017-08-01**

Before laying the tiles, check the shade, calibre and quality. No claims will be accepted once the tiles have been laid. Leave a tile joint of at least 0.5 mm in the case of rectified tiles and 1.5 mm for non-rectified ones. The tile colour shown in this data sheet is merely indicative and it might differ from the real tile colour. This document is purely for sales purposes and it cannot be used in any legal or administrative proceedings, in a witness statement, or as documentary proof without the express permission of PERONDA GROUP.