

BASIC CHARACTERISTICS:

Pieces name:	NEWCLAY SAND (PRC) 120X120 RC/ARG_S
Size (cm.):	120X120
Colour:	SAND
Series name:	NEWCLAY
Family:	GLAZED PORCELAIN

TECHNICAL CHARACTERISTICS:

Fabrication process:	Dry pressed ceramic tile	
Absorption group (ISO 13006):	BIa	
Finish:	GL	
Rectified:	Yes	
Body:	STD Body	
Surface Finish:	Matt	
Work size (mm):	1200 x 1200 x 9	
Aesthetic classification and shade variations:	V.2	
Diferent design number:	10	
Facial dimension range and surface quality:	Complies with the standard	UNE EN ISO 10545-2

PHYSICAL CHARACTERISTICS:

Water absorption:	E ≤ 0.5	UNE EN ISO 10545-3
-------------------	---------	--------------------

IMPORTANT NOTES:

Before fixing tiles, please check the shade, calibre and choice. Claims regarding these items cannot be accepted once the materials has been fixed. Protecting the product during placement and appropriate cleaning after grouting and other work are part of a correct fitting process. For more information about the instalation and grouting visit the Argenta website: www.argentaceramica.com. The packing list of this pieces are indicated on the Argenta website: www.argentaceramica.com/packing-list. The stated weight is approximate, it may vary up to 5% depending on the model, the variation may begreater for products with relief.Document with commercial information and cannot be used either judicially or administratively without the express permission of Argenta Ceramica S.L.The color of the tile of this technical data is for guidance only and may differ from the actual tile color.

Certifications:





Braking strength (S):	> 1300 N	UNE EN ISO 10545-4
Flexural tensile strength (N/mm2):	≥35 N/mm2	
Resistance to superficial abrasion (PEI):	4	UNE EN ISO 10545-7
Lineal thermal expansion between 20° to 100°C	< 9*10-6 / °C	UNE EN ISO 10545-8
Thermic shock resistance:	Complies with the standard	UNE EN ISO 10545-9
Crazing resistance:	Complies with the standard	UNE EN ISO 10545-11
Durability; Freeze - thaw cycle:	Complies with the standard	UNE EN ISO 10545-12
Scratch hardness according to Mohs:	6	UNE EN 67-101-92
Slipperness:	Anti-slip Class 1	UNE-EN 16165 Appendix C
	Anti-slip R.9	UNE-EN 16165 Appendix B

CHEMICAL PROPERTIES:

Resistance to home cleaning products and swimming pool salts:	Clase A	UNE EN ISO 10545-13
Resistance to High concentration acids and bases:	Complies with the standard	
Resistance to Low concentration acids and bases:	Complies with the standard	
Resistance to staining:	Complies with the standard	UNE EN ISO 10545-14

CE MARKING:

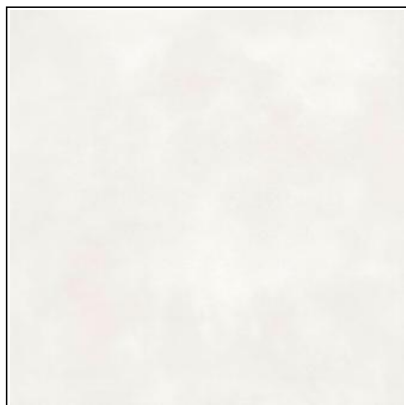
	004CPR-PR/11-4-2013
--	---------------------

IMPORTANT NOTES:

Before fixing tiles, please check the shade, calibre and choice. Claims regarding these items cannot be accepted once the materials has been fixed. Protecting the product during placement and appropriate cleaning after grouting and other work are part of a correct fitting process. For more information about the instalation and grouting visit the Argenta website: www.argentaceramica.com. The packing list of this pieces are indicated on the Argenta website: www.argentaceramica.com/packing-list. The stated weight is approximate, it may vary up to 5% depending on the model, the variation may begreater for products with relief.Document with commercial information and cannot be used either judicially or administratively without the express permission of Argenta Ceramica S.L.The color of the tile of this technical data is for guidance only and may differ from the actual tile color.

Certifications:





BASIC CHARACTERISTICS:

Pieces name:	NEWCLAY WHITE (PRC) 120X120 RC/ARG_S
Size (cm.):	120X120
Colour:	WHITE
Series name:	NEWCLAY
Family:	GLAZED PORCELAIN

TECHNICAL CHARACTERISTICS:

Fabrication process:	Dry pressed ceramic tile	
Absorption group (ISO 13006):	BIa	
Finish:	GL	
Rectified:	Yes	
Body:	STD Body	
Surface Finish:	Matt	
Work size (mm):	1200 x 1200 x 9	
Aesthetic classification and shade variations:	V.2	
Diferent design number:	10	
Facial dimension range and surface quality:	Complies with the standard	UNE EN ISO 10545-2

PHYSICAL CHARACTERISTICS:

Water absorption:	E ≤ 0.5	UNE EN ISO 10545-3
-------------------	---------	--------------------

IMPORTANT NOTES:

Before fixing tiles, please check the shade, calibre and choice. Claims regarding these items cannot be accepted once the materials has been fixed. Protecting the product during placement and appropriate cleaning after grouting and other work are part of a correct fitting process. For more information about the instalation and grouting visit the Argenta website: www.argentaceramica.com. The packing list of this pieces are indicated on the Argenta website: www.argentaceramica.com/packing-list. The stated weight is approximate, it may vary up to 5% depending on the model, the variation may begreater for products with relief.Document with commercial information and cannot be used either judicially or administratively without the express permission of Argenta Ceramica S.L.The color of the tile of this technical data is for guidance only and may differ from the actual tile color.

Certifications:





Braking strength (S):	> 1300 N	UNE EN ISO 10545-4
Flexural tensile strength (N/mm2):	≥35 N/mm2	
Resistance to superficial abrasion (PEI):	4	UNE EN ISO 10545-7
Lineal thermal expansion between 20° to 100°C	< 9*10-6 / °C	UNE EN ISO 10545-8
Thermic shock resistance:	Complies with the standard	UNE EN ISO 10545-9
Crazing resistance:	Complies with the standard	UNE EN ISO 10545-11
Durability; Freeze - thaw cycle:	Complies with the standard	UNE EN ISO 10545-12
Scratch hardness according to Mohs:	6	UNE EN 67-101-92
Slipperness:	Anti-slip Class 1	UNE-EN 16165 Appendix C
	Anti-slip R.9	UNE-EN 16165 Appendix B

CHEMICAL PROPERTIES:

Resistance to home cleaning products and swimming pool salts:	Clase A	UNE EN ISO 10545-13
Resistance to High concentration acids and bases:	Complies with the standard	
Resistance to Low concentration acids and bases:	Complies with the standard	
Resistance to staining:	Complies with the standard	UNE EN ISO 10545-14

CE MARKING:

	004CPR-PR/11-4-2013
--	---------------------

IMPORTANT NOTES:

Before fixing tiles, please check the shade, calibre and choice. Claims regarding these items cannot be accepted once the materials has been fixed. Protecting the product during placement and appropriate cleaning after grouting and other work are part of a correct fitting process. For more information about the instalation and grouting visit the Argenta website: www.argentaceramica.com. The packing list of this pieces are indicated on the Argenta website: www.argentaceramica.com/packing-list. The stated weight is approximate, it may vary up to 5% depending on the model, the variation may begreater for products with relief.Document with commercial information and cannot be used either judicially or administratively without the express permission of Argenta Ceramica S.L.The color of the tile of this technical data is for guidance only and may differ from the actual tile color.

Certifications:

