

# RUBIK

## Porcelain Tile

12,3x12,3 cm  
4.8x4.8"

*white  
sand  
clay  
taupe  
sage  
green  
blue  
silver  
anthracite*

RUBIK is a 12.3x12.3cm porcelain tile collection with a strong emphasis on colour. The distinguishing hallmark of these straight-edged, smooth matt tiles is their shade variation, affording all kinds of design potential. The 9 sophisticated colours that make up the collection are rich in subtle nuances, lending a distinctive personality. This can be further enhanced by the different combinations of tile joints that RUBIK allows for.

RUBIK nos propone una colección donde el color es el protagonista. Con un amplio abanico de posibilidades, presentamos una superficie lisa en acabado mate y bordes rectos, donde la variación de tonos marca la diferencia. Además, los 9 colores de los que se compone son ricos en matices, sofisticados y capaces de dotar de personalidad a cualquier ambiente. Las grandes alternativas de decoración se amplían con las diferentes combinaciones de juntas. RUBIK es un porcelánico de formato 12,3x12,3 cm.

● RUBIK GREEN/12.3X12.3 - ING. RUBIK GREEN/1X12.3  
● RAYS SAND SP/90X90/C/R





● RUBIK SAND/12.3X12.3 · RUBIK CLAY/12.3X12.3

○ RUBIK CLAY/12.3X12.3

● SENA WHITE SP/90X90/C/R



- RUBIK TAUPE/12.3X12.3
- RAYS TAUPE SP/90X90/C/R

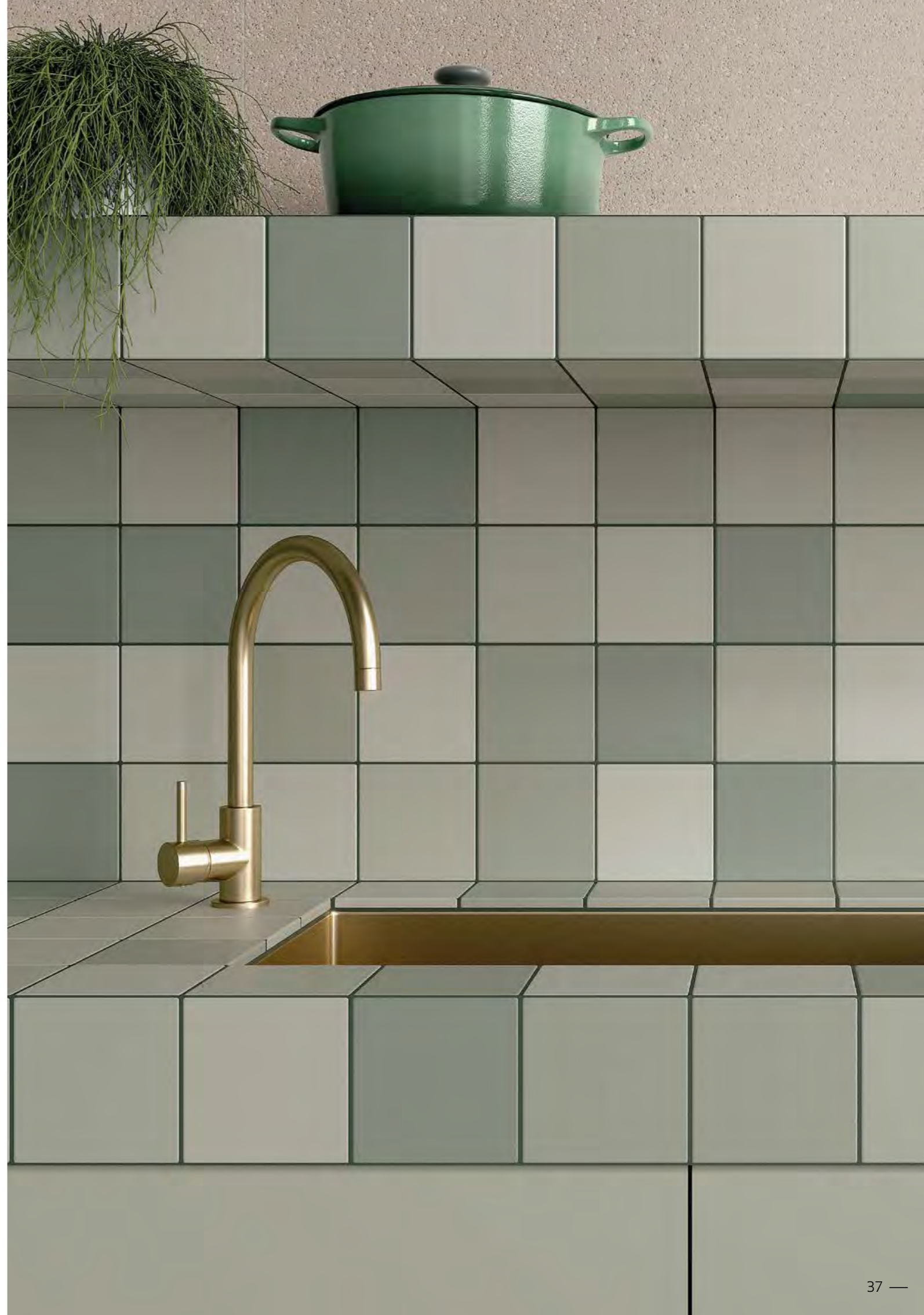
- RUBIK BLUE/12.3X12.3 · RUBIK WHITE/12.3X12.3
- RUBIK SILVER/12.3X12.3





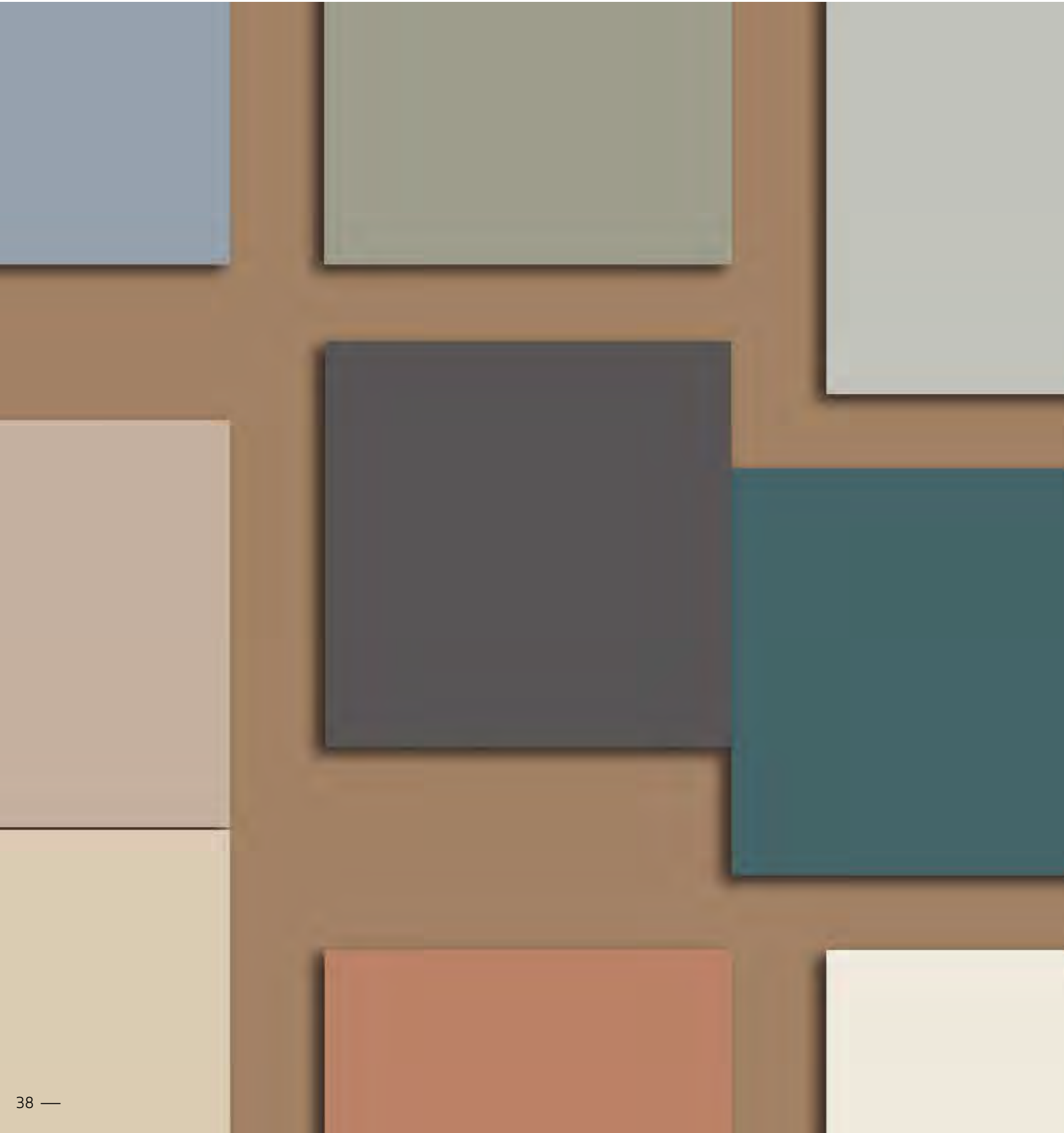
- RUBIK BLUE/12.3X12.3 · RUBIK ANTHRACITE/12.3X12.3
- RUBIK WHITE/12.3X12.3 · RUBIK BLUE/12.3X12.3 · RUBIK ANTHRACITE/12.3X12.3
- RUBIK BLUE/12.3X12.3

- RUBIK SAGE/12.3X12.3 · EVOQUE TAUPE SP/90X90/C/R
- RUBIK SAGE/12.3X12.3



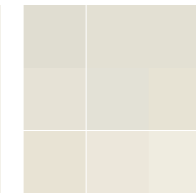
# RUBIK

porcelain tile — 12,3x12,3



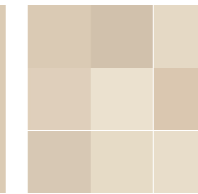
36711 RUBIK WHITE/12,3X12,3  
Q39 (12,3x12,3 cm — 4<sup>13</sup>/<sub>16</sub>x4<sup>13</sup>/<sub>16</sub>"\*)  
12 patterns  
\*\* 2 Kerakoll

36722 ING.RUBIK WHITE/1X12,3  
H31 (1x12,3 cm — 3<sup>7</sup>/<sub>8</sub>x4<sup>13</sup>/<sub>16</sub>"\*)



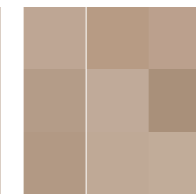
36713 RUBIK SAND/12,3X12,3  
Q39 (12,3x12,3 cm — 4<sup>13</sup>/<sub>16</sub>x4<sup>13</sup>/<sub>16</sub>"\*)  
12 patterns  
\*\* 44 Kerakoll

36724 ING.RUBIK SAND/1X12,3  
H31 (1x12,3 cm — 3<sup>7</sup>/<sub>8</sub>x4<sup>13</sup>/<sub>16</sub>"\*)



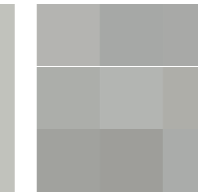
36720 RUBIK CLAY/12,3X12,3  
Q39 (12,3x12,3 cm — 4<sup>13</sup>/<sub>16</sub>x4<sup>13</sup>/<sub>16</sub>"\*)  
12 patterns  
\*\* 32 Kerakoll

36793 ING.RUBIK CLAY/1X12,3  
H31 (1x12,3 cm — 3<sup>7</sup>/<sub>8</sub>x4<sup>13</sup>/<sub>16</sub>"\*)



36715 RUBIK TAUPE/12,3X12,3  
Q39 (12,3x12,3 cm — 4<sup>13</sup>/<sub>16</sub>x4<sup>13</sup>/<sub>16</sub>"\*)  
12 patterns  
\*\* 43 Kerakoll

36726 ING.RUBIK TAUPE/1X12,3  
H31 (1x12,3 cm — 3<sup>7</sup>/<sub>8</sub>x4<sup>13</sup>/<sub>16</sub>"\*)



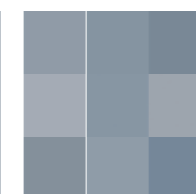
36712 RUBIK SILVER/12,3X12,3  
Q39 (12,3x12,3 cm — 4<sup>13</sup>/<sub>16</sub>x4<sup>13</sup>/<sub>16</sub>"\*)  
12 patterns  
\*\* 7 Kerakoll

36794 ING.RUBIK SILVER/1X12,3  
H31 (1x12,3 cm — 3<sup>7</sup>/<sub>8</sub>x4<sup>13</sup>/<sub>16</sub>"\*)



36716 RUBIK GREEN/12,3X12,3  
Q39 (12,3x12,3 cm — 4<sup>13</sup>/<sub>16</sub>x4<sup>13</sup>/<sub>16</sub>"\*)  
12 patterns  
\*\* 11 Kerakoll

36727 ING.RUBIK GREEN/1X12,3  
H31 (1x12,3 cm — 3<sup>7</sup>/<sub>8</sub>x4<sup>13</sup>/<sub>16</sub>"\*)



36719 RUBIK BLUE/12,3X12,3  
Q39 (12,3x12,3 cm — 4<sup>13</sup>/<sub>16</sub>x4<sup>13</sup>/<sub>16</sub>"\*)  
12 patterns  
\*\* 14 Kerakoll

36729 ING.RUBIK BLUE/1X12,3  
H31 (1x12,3 cm — 3<sup>7</sup>/<sub>8</sub>x4<sup>13</sup>/<sub>16</sub>"\*)

ING: profile view  
ING: vista de perfil



Recommended joint color:  
Color de junta recomendado:

\* MAPEI | ULTRACOLOR PLUS  
\*\* KERAKOLL | FUGABELLA

## TECHNICAL CHARACTERISTICS

|           | MATT | GLOSS | SHADE VARIATION | SHOWER WALL | SHOWER FLOOR | FLOOR TRAFFIC | ANTISLIP  |
|-----------|------|-------|-----------------|-------------|--------------|---------------|---|
| RUBIK     | •    | •     | •               | •           | •            | •             | DIN 51130 R9<br>UNE-EN 12633 C1<br>BS 7992-2 +36WET<br>ANSI A1371 >0.42 |
| ING.RUBIK | •    | •     | •               | •           | •            | •             |   |

## PACKING

| UNIT      | PIECES         | PIECES | PIECES | m <sup>2</sup> | kg   | WEIGHT  | WEIGHT  | BOXES  | m <sup>2</sup> | kg     | cm        | THICKNESS | THICKNESS |
|-----------|----------------|--------|--------|----------------|------|---------|---------|--------|----------------|--------|-----------|-----------|-----------|
| PIECE     | m <sup>2</sup> | sq ft  | BOX    | m <sup>2</sup> | BOX  | BOX (B) | BOX (B) | PALLET | sq ft          | PALLET | PALLET    | (mm)      | (in)      |
| RUBIK     | 66             | 6      | 34     | 0.51           | 5.54 | 9.52    | 20.94   | 120    | 61.73          | 664.42 | 120x80x90 | 8.7       | 0.34      |
| ING.RUBIK | 812            | 76     | 60     | 0.07           | 0.79 | 1.3     | 2.86    | 180    | 13.28          | 142.99 | 120x80x96 | 10        | 0.39      |